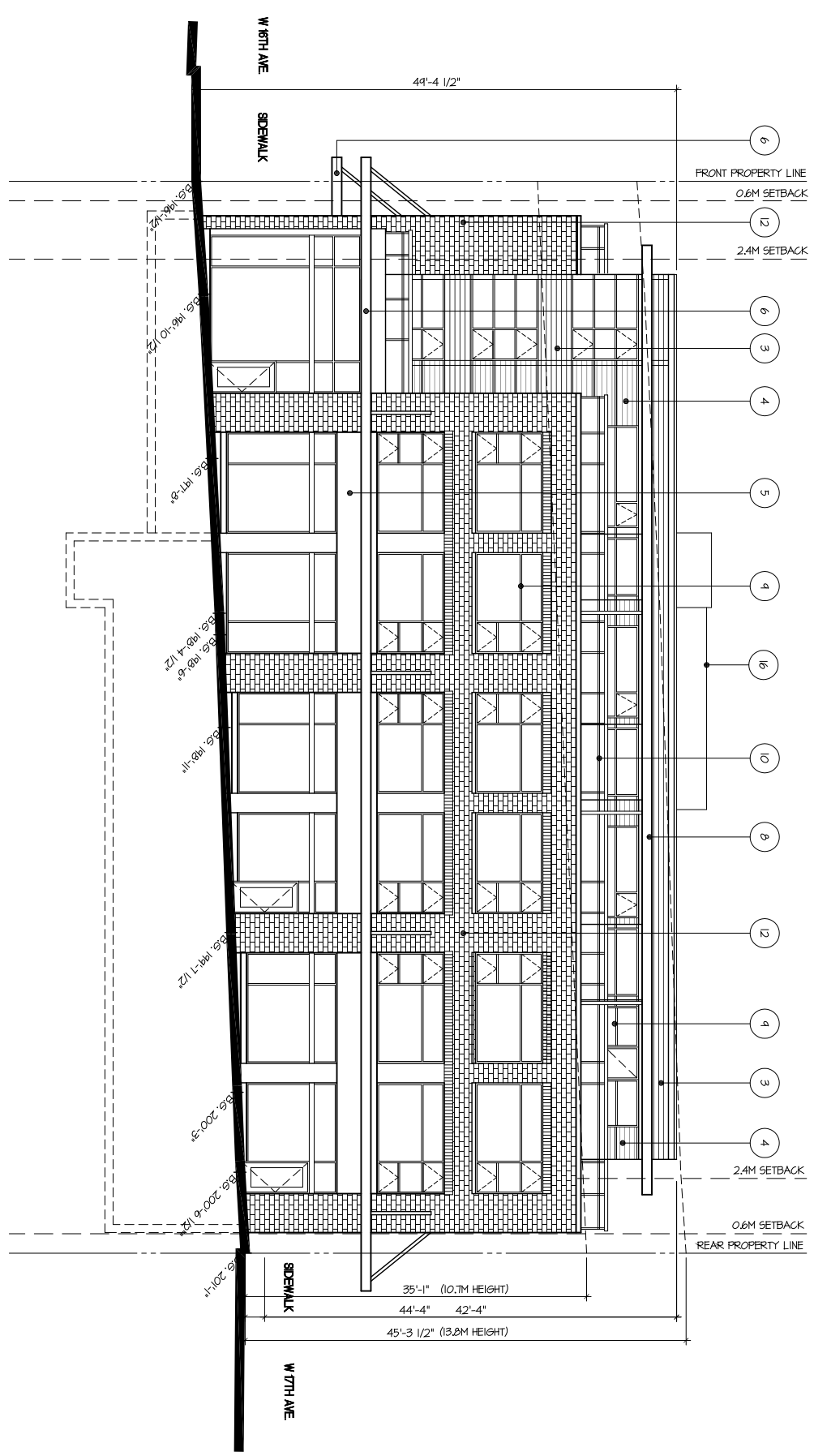


280 - 1770 Burrard Street
 Vancouver, BC V6J 3K7
 604 689 7701 tel
 604 689 8529 fax

www.dysanarchitecture.com

102 - 10 Esplanade
 Nanaimo, BC V9R 4T7
 250 753 5552 tel
 250 753 5826 fax

MATERIAL / FINISH LEGEND	
1	REFINISHED METAL CLADDING A
2	REFINISHED METAL CLADDING B
3	REFINISHED METAL CLADDING C
4	REFINISHED METAL CLADDING D
5	METAL SIGN BAND
6	STEEL AND GLASS CANOPY
7	ALUMINUM VISOR
8	METAL FACED CORNICE
9	DOUBLE GLAZED ALUMINUM WINDOWS
10	FREE STANDING HANDRAIL WITH TIMBERED GLASS INFILL AND METAL ACCENTS
11	MASONRY AND METAL SCREEN FENCE
12	MASONRY A
13	MASONRY B
14	ACCENT METAL PANEL
15	SPANDREL GLASS
16	PERFORATED ALUMINUM SCREEN
17	NON-CLIMBABLE METAL SCREEN
18	METAL SHINGADE
19	TRELLIS
20	METAL LOUVER



ELEV. OVERHEAD	244'-0"	LEVEL 1
T.O. PARAPET	245'-5"	LEVEL 1
U/S OF DOIST	243'-1 3/4"	LEVEL 1 BELOW
	2'-3 1/4"	
	4'-0 3/4"	
RESIDENTIAL	234'-1"	LEVEL 4
RESIDENTIAL	10'-0 1/2"	LEVEL 3
RESIDENTIAL	10'-0 1/2"	LEVEL 2
	14'-6"	
AGENCY	14'-6"	LEVEL 1
RETAIL	2'	LEVEL 1
	9'-11 1/2"	LEVEL 1 BELOW
PARKING LEVEL 1	187'-6"	LEVEL P1

PROJECT TITLE:
**3595 WEST 17th AVE
 VANCOUVER, BC
 (FORMERLY
 3212 DUNBAR ST)**

DRAWING TITLE:
**ELEVATION
 WEST**

DATE: SEPT. 22, 2008
 SCALE: 1/8" = 1'-0"
 DRAWN: KW
 APPROVED: JD
 PROJECT NUMBER: A207926

DRAWING NUMBER:
.A31B

This drawing is an instrument of service, is the property of dysan architecture and shall remain their property. It is to be used for the project and site only, and shall not be used elsewhere, without written permission of dysan architecture. Any reproduction, copying, or distribution of this drawing is a condition precedent to the use thereof. When dimensions shall have precedence over scaled dimensions, conditions shall vary, and be responsible for all dimensions and conditions from the dimensions and conditions shown on the drawing. dysan architecture is not responsible for any errors or omissions, or for any consequences arising from the use of this drawing, or for any consequences arising from the use of this drawing, or for any consequences arising from the use of this drawing, or for any consequences arising from the use of this drawing.

