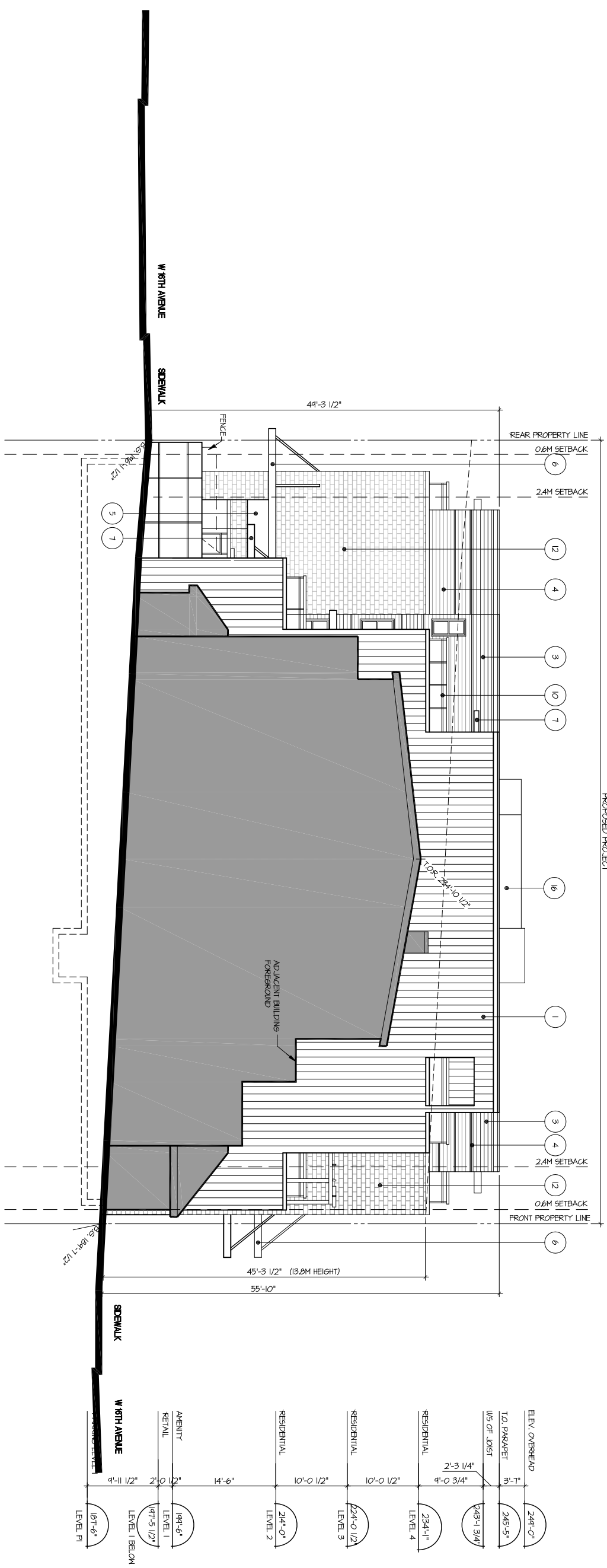


280 - 1770 Burrard Street  
 Vancouver, BC V6J 3K7  
 604 689 7710 Ext  
 604 689 8829 fax  
 www.dysanarchitecture.com

102 - 10 Esplanade  
 Vancouver, BC V6R 4T7  
 250 753 5552 BR  
 250 753 5826 fax

MATERIAL / FINISH LEGEND	
1	REFINISHED METAL CLADDING A
2	REFINISHED METAL CLADDING B
3	REFINISHED METAL CLADDING C
4	REFINISHED METAL CLADDING D
5	METAL SIGN BAND
6	STEEL AND GLASS CANOPY
7	ALUMINUM VISOR
8	METAL FACED CORNICE
9	DOUBLE GLAZED ALUMINUM WINDOWS
10	FREE-MANUFACTURED HANDRAIL WITH TIMBERED GLASS INFILL AND METAL ACCENTS
11	MASONRY AND METAL SCREEN FENCE
12	MASONRY A
13	MASONRY B
14	ACCENT METAL PANEL
15	SPANDREL GLASS
16	PERFORATED ALUMINUM SCREEN
17	NON-CLIMBABLE METAL SCREEN
18	METAL SUNSHADE
19	TRELLIS
20	METAL LOUVER

PROPOSED PROJECT



ELEV. OVERHEAD	T.O. PARAPET	U/S OF JOIST	RESIDENTIAL	RESIDENTIAL	RESIDENTIAL	RESIDENTIAL	AVENUE RETAIL	LEVEL BELOW
244'-0"	3'-1"	243'-1 3/4"	234'-1"	224'-0 1/2"	214'-0"	194'-6"	191'-5 1/2"	LEVEL 1
		2'-3 1/4"	9'-0 3/4"	10'-0 1/2"	10'-0 1/2"	14'-6"	2'-0 1/2"	LEVEL 1 BELOW
							9'-11 1/2"	LEVEL P1

• NO.   DATE   ISSUE:	1   22 APR   ISSUED FOR DP APPLICATION
	2   14 MAY   ISSUED FOR UDP
• PROJECT TITLE:	3595 WEST 17th AVE VANCOUVER, BC (FORMERLY 3212 DUNBAR ST)
• NO.   DATE   REVISION:	

• DRAWING TITLE:	EAST ELEVATION
• DATE:	SEPT. 22, 2008
• SCALE:	1/8" = 1'-0"
• DRAWN:	KW
• APPROVED:	DJ
• PROJECT NUMBER:	A207926

This drawing is an instrument of service, the property of dysan architecture. It is to be used only for the project and site identified herein. It is not to be reproduced, copied, or used for any other project without the written permission of dysan architecture. A condition precedent to the use of this drawing is a condition precedent to the use thereof. Conditions shall have precedence over scaled dimensions and conditions from the dimensions and conditions shown on the drawing. dysan architecture is not responsible for the construction of the building or for any other conditions not shown on the drawing.

• DRAWING NUMBER:  
**.A32B**